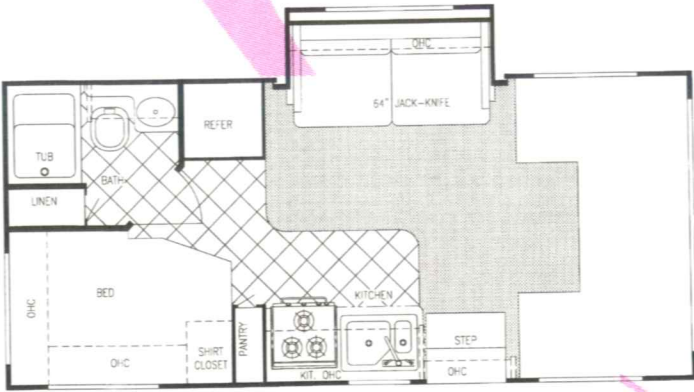
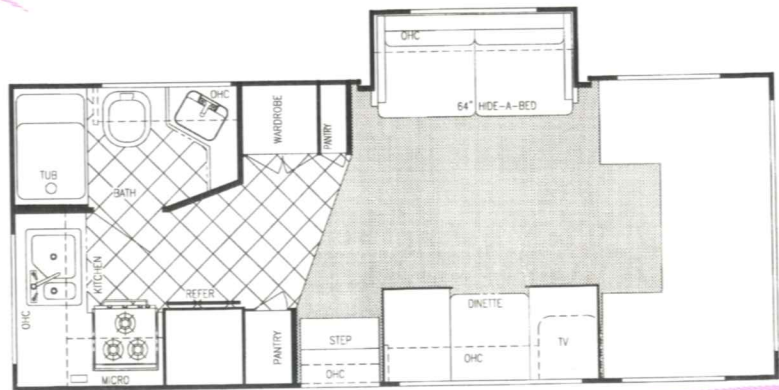


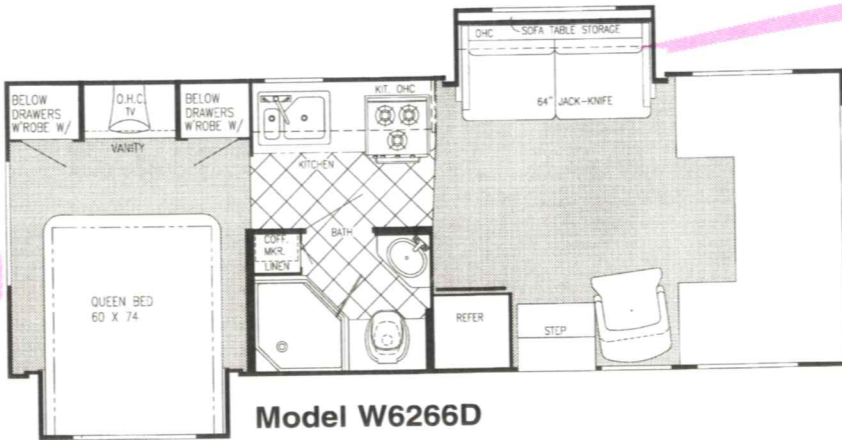
LIMITED EDITION 2000



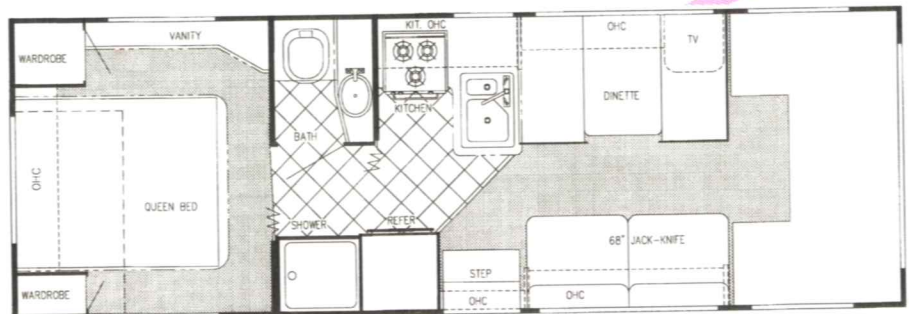
Model W6212D



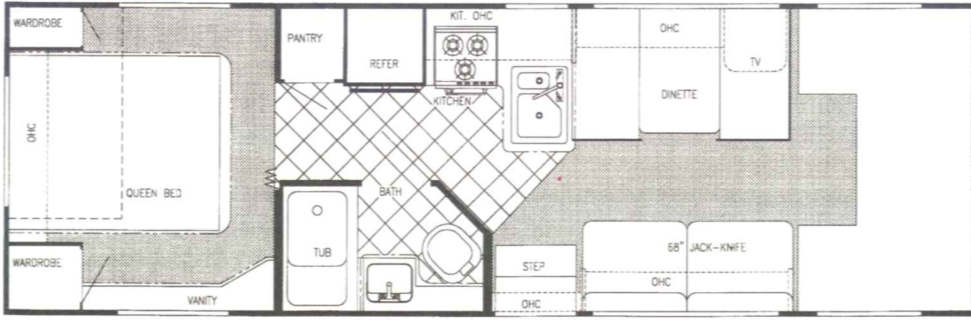
Model W6236D



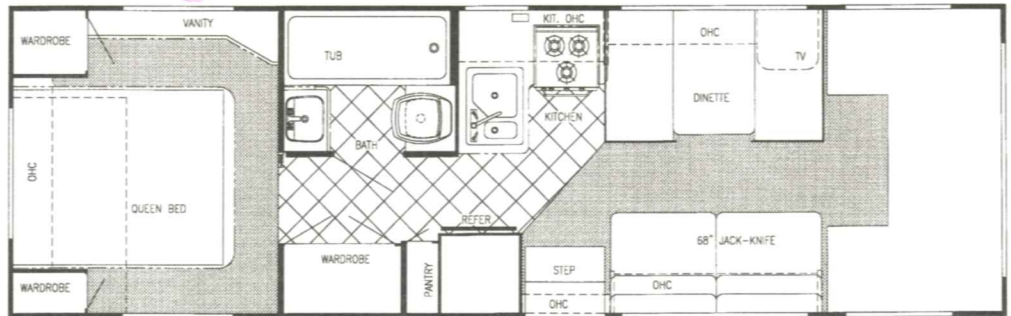
Model W6266D



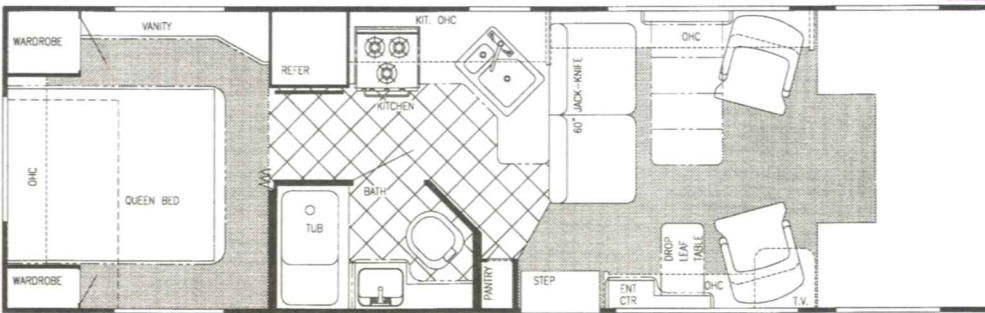
Model W6272D (Twin Beds or Bunks Opt.)



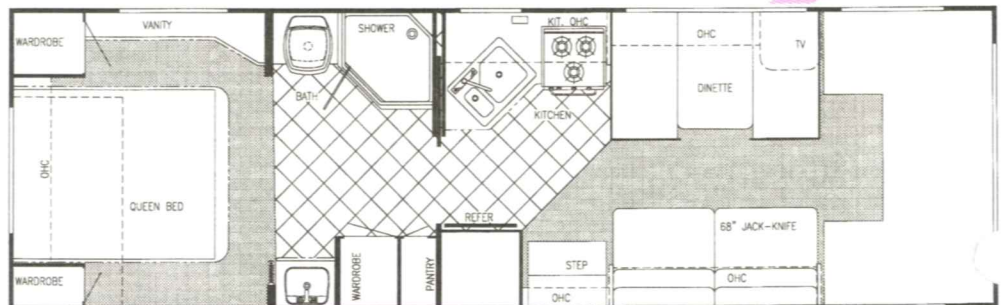
Model W6293D (Twin Beds or Bunks Opt.)



Model W6294D (Twin Beds or Bunks Opt.)

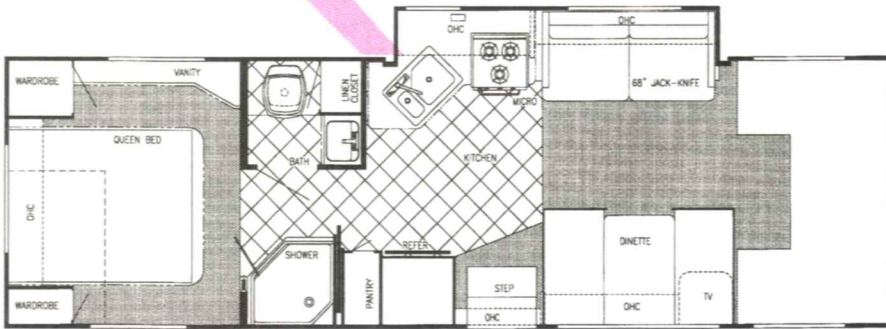


Model W6300D (Twin Beds or Bunks Opt.)

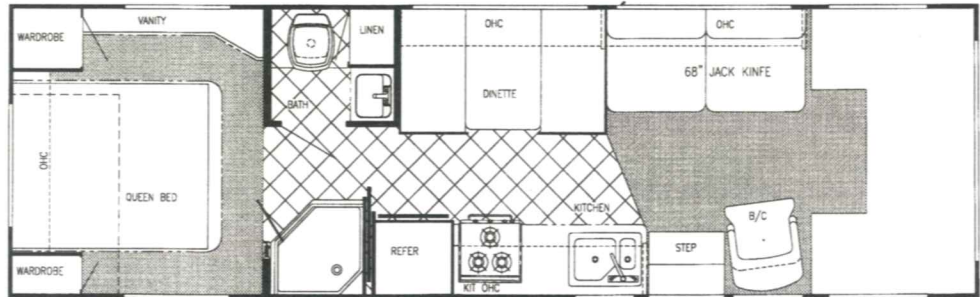


Model W6301D (Twin Beds or Bunks Opt.)

LIMITED EDITION 2000



Model W6313D (Twin Beds or Bunks Opt.)



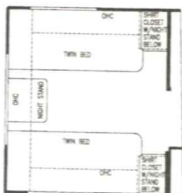
Model W6315D (Twin Beds or Bunks Opt.)



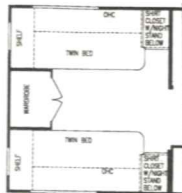
Model W6302D

OPTIONS

Twin Beds (Nightstand)



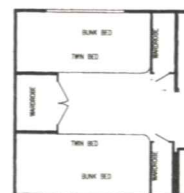
Twin Beds (Wardrobe)



Bunk Dinette



Bunk Beds



LIMITED EDITION

Standard Specifications

Interior & Decor

- Approx. 6'-5" Interior Height (most models)
- Stile Constructed Cabinetry
- Natural Oak Frame Raised Panel Cabinet Doors (in galley)
- Privacy Curtain Cab
- Deluxe Carpet w/Pad
- Generous Overhead Storage
- 2-Way Driver & Passenger Seat
- Coordinated Bedspreads & Shams (most models)
- Decorator Curtains & Day/Night Shades w/Valances
- Interior Decorative Clock
- Rubber Entry Step
- Queen Size Bed, Cab-Over
- Power Vent in Commode
- Tub Surround
- Mini Blinds Kitchen
- Hydraulic-Operated Glide Out Room (slide out models)

Electrical Systems

- Easy Store 30' Elect. Power Cord
- Double Overhead Reading Lights
- 110-Volt Receptacles
- Ground Fault Circuit Interrupter
- Outside Receptacle
- TV Antenna w/Amp & Boost
- Auxiliary Battery
- Electronic Converter w/Charger (45 Amp)
- Generator Prep
- AM/FM Cassette w/4 Speakers
- Monitor Panel

Exterior & Construction

- 101" Wide-Body Design
- Welded Aluminum Cage Construction
- 4-Ply Laminated Walls, Roof & Floor
- Smooth Fiberglass Exterior
- Radiused Laminated Rubber Roof w/ Heliarc-Welded Aluminum Rafters, and Exclusive Molded Roof Brick Insulation w/Bubble Wrap Duct System (N/A 6212)
- Hydraulic Pump Override System
- Tubular Steel Floor
- Laminated Floor w/ Metal Underbelly
- Foamed, Sealed & Undercoated
- Full Basement Storage (most models)
- Distinctive Exterior Graphics
- Expansive Radius Slider Windows
- Hose Storage Bumper
- Front Cab-Over Window
- Outside Grab Handle
- Chrome Bumper Cover (most models)
- Aluminum Running Boards
- Dead Bolt on Entry door
- Spare Tire and Carrier
- Roof Rack & Ladder
- Bumper Jack (Opt. most models)

Bath & Water

- Demand Water System
- City Water Hook-Up
- Tub/Shower Combo
- Lavatory w/Base Cabinet Storage
- Bath Convenience Accessories
- Water Bypass Valve
- Skydome in Shower (most models)

Chassis

- 6.8L, V-10 Engine
- E-30 Chassis (Up to 22')
- E-40 Super Duty Chassis (23' & above)
- 4 Speed Auto. Overdrive Trans.
- Tilt Wheel Steering
- Power Brakes & Steering
- Deluxe Exterior Mirrors
- Radial Tires
- Cruise Control
- Gas Tank - Approx. 35 Gal. (21')
Approx. 55 Gal. (24' & up)
- FORD Turbo Diesel Chassis (Opt.)
- Dual Air Bags

Appliances

- 3-Burner Range w/Oven
- Large 2-Way Dbl. Door Refer.
- Microwave Installed
- 6 Gal. Elect. Ign. Water Heater
- 25,000 BTU Furnace - most models (30,000 BTU - 30' & above)
- 13,500 BTU Roof Air
- Large LP Gas Tank

Popular Options

- Outside Entertainment Center
- Sliding Battery Tray
- Battery Disconnects
- Heated and Remote Mirrors
- Cabover Entertainment Center
- Side Cabover Entertainment Center
- Slide-Out Room Awning
- Chevrolet Chassis (6212, 6236)
- Solar Charge 3 Speed Fantastic Fan In Bedroom

GAS MODELS	W6212D	W6236D	W6266D	W6272D	W6293D	W6294D	W6300D	W6301D	W6302D	W6313D	W6315D
FORD CHASSIS:	V-10	V-10	V-10	V-10	V-10	V-10	V-10	V-10	V-10	V-10	V-10
Wheelbase	156"	176"	176"	186"	208"	208"	208"	208"	208"	208"	208"
GVWR (lbs.)	11,500	14,050	14,050	14,050	14,050	14,050	14,050	14,050	14,050	14,050	14,050
*Exterior Length	21'-11"	24'-2"	26'-11"	28'-3"	29'-5"	30'-1"	30'-5"	30'-8"	31'-4"	30'-8"	30'-11"
*Exterior Height with A/C	11'-1"	11'-1"	11'-3"	11'-3"	11'-3"	11'-3"	11'-3"	11'-3"	11'-3"	11'-3"	11'-3"
*Fresh Water Tank (Gal.)	32	32	34	34	34	34	34	34	34	34	34
*Grey Holding Tank (Gal.)	30	30	36	36	36	36	36	36	36	36	36
*Black Holding Tank (Gal.)	30	30	36	36	36	36	36	36	36	36	36
LP Gas Tank (lbs.)	62lb.	62lb.	62lb.	62lb.	62lb.	62lb.	62lb.	62lb.	62lb.	62lb.	62lb.
*Basement Storage	N/A	N/A	N/A	78.6	89.5	104	102	104.6	52.2	90.4	99.5

* Approximate in cubic feet and subject to change without notice.

For further information, contact your local dealer or Gulf Stream. Gulf Stream Coach, Inc. reserves the right to make changes in prices, colors, materials, components and specifications and to discontinue models at any time without notice or obligation. Gulf Stream Coach, Inc. assumes no responsibility for any error in type or print reproduction of specifications or floorplans in this brochure.

TP 50M 7/99

8/99

CONQUEST 2000



LEADING THE WAY THROUGH INNOVATION AND VALUE



CONQUEST CLASSIC



W6301

The all-new Conquest Classic by Gulf Stream is your best choice for high-end luxury at an affordable price. With front and rear molded fiberglass caps, sleek exterior graphics, ducted roof air conditioning, full pass-through basement storage, and an array of wide-body floorplans, the Conquest Classic offers just about every luxury amenity you'd ever want in a Class C mini-motorhome.



With solid oak raised-panel cabinet doors, cabinet stiles, and real oak paneling - the interior of the Conquest Classic exudes class. Contemporary designer-coordinated decors feature only the finest durable fabrics and carpeting, for an overall look of quality and craftsmanship.



W6316

The bedroom in the Classic offers a nice, quiet retreat with rich oak cabinetry, large mirrored wardrobe, spacious overhead storage, designer window treatments with matching bedspread and pillow covers, and a beautiful hand-crafted wall vanity for a tremendous amount of added countertop and storage space.



W6316



W6301

When it comes to exterior storage space, the Classic offers the ultimate in steel-framed, pass-through sub-floor storage compartments. These storage areas are formed out of galvanized steel, finished with indoor/outdoor carpeting, and offer electrical outlets and convenience lighting.

Classic

The front cabover and cockpit area of the Classic are designed for both elegant eye appeal and practicality with solid oak accents, padded edging and designer-coordinated window treatments.

You'll love the upgrades in the kitchen area, including this designer white sink with matching faucet.



W6316

CONQUEST CLASS C



Check out Gulf Stream's unique optional side cabover entertainment center option - another innovation designed to offer you more for your money! Choose the full overhead entertainment center (shown on the right) for extra storage and a 19" color television with remote.



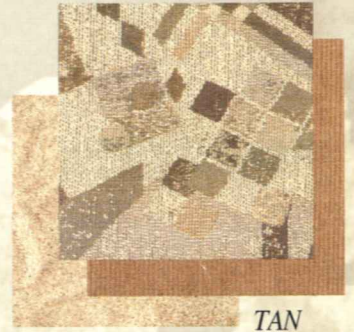
Interior Colors



BLUE



PLUM



TAN

Gulf Stream uses durable stain and fire resistant fabrics and carpets to ensure that your coach will keep it's good looks for years to come! Choose from a selection of five different exciting and fresh interior color decor packages.

Light GREEN



Dark GREEN



Sport Series

The Conquest Sport Series by Gulf Stream is your best choice for affordable Class C mini-motorhome living. With smooth fiberglass laminated, aluminum-framed sidewalls, an aluminum-framed laminated rubber roof, and a steel-framed laminated coach floor system with metal underbelly, the Sport is built to last while not putting a strain on your family budget!



GULF STREAM'S NEW GENERATION CRADLE OF STRENGTH

Classic & Limited Edition (23' and above)

1. Seamless Rubber Roof For Greater Energy Efficiency and Dependability.

2. Luan Decking for Additional Strength.

3. Molded, High Density EPS (Expanded PolyStyrene) Roof Brick Insulation - Provides Consistent Insulative Value As Well As Superior Dimensional Rigidity.

4. One-Piece Formed Aluminum Air Conditioning Duct, Completely Surrounded By EPS Insulation.

5. Bubble-Wrapped Foil Insulation Provides Superior Insulation and Helps Prevent Condensation.

6. Rugged Welded Tubular Aluminum Roof Framing.

7. Rugged Heavy-Gauge Tubular Aluminum, Fixture Welded to Form the Sidewall Framing.

8. High-Density EPS Insulation Provides Superior Laminating and Bonding Characteristics and Insures Greater Energy Efficiency.

9. Interior Wall Panels Securely Laminated to Sidewall Framing.

10. "Mende" Fiberglass Exterior Vacuum-bond Laminated to Sidewall Framing for Lasting Beauty and Durability. (Super Slick - Classic)

11. High-Quality Stain-Resistant Carpeting Available in Designer Coordinated Colors.

12. Extra-Thick Padding Under Carpet Provides Extra Comfort and Increases Carpet Durability.

13. Seamless Structurewood Floor Decking Laminated to Steel Floor Structure Assures a Quiet, Long-Lasting, Rigid Floor and comes with a 10-Year Warranty.

14. Heavy-Gauge Tubular Steel Framing, Fixture Welded for Extra Strength and Stability.

15. Heavy-Gauge Tubular Steel Framed, Fixture Welded Floor Truss System Provides the Strongest Class C Foundation in the Industry.

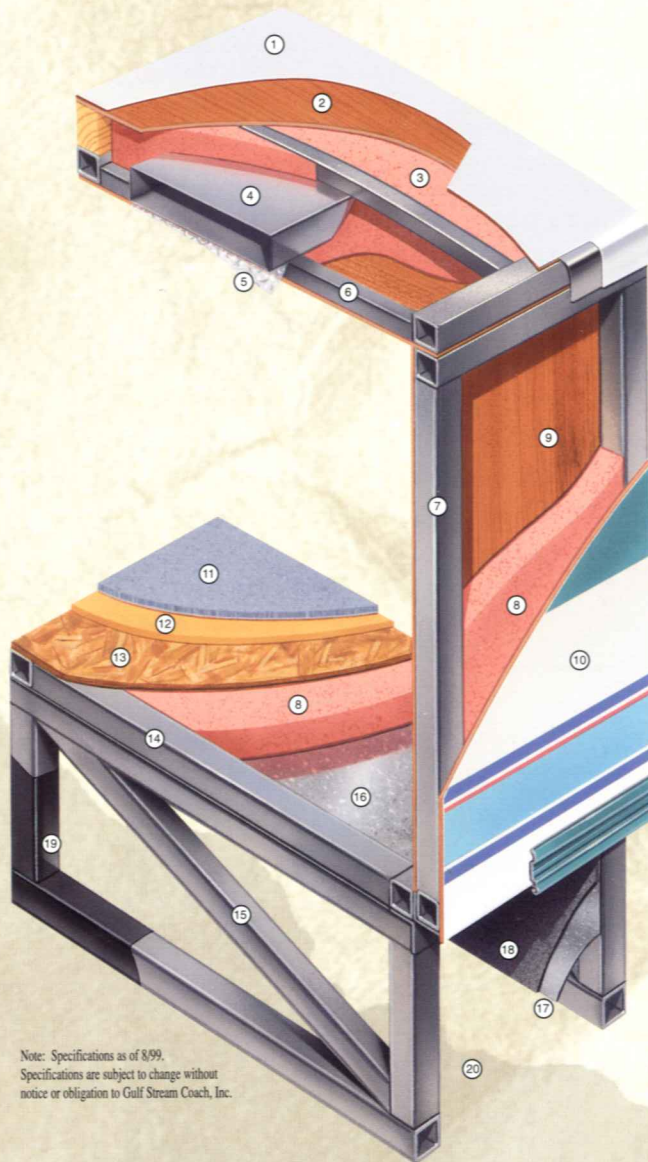
16. Seamless Layer of Galvanized Steel Securely Laminated to the Steel Floor Framing.

17. Galvanized Steel Used to Form Each Storage & Holding Compartment.

18. Durable All-Weather Carpeting Completes Each Accessible Storage Compartment, Providing Extra Protection for Luggage and Valuables.

19. Rust-Prohibitive Paint Coating Applied to All Steel Framing Assures Corrosion and Rust Protection.

20. The Industry's Strongest, Most Spacious Exterior Storage Compartments.



Note: Specifications as of 8/99.
Specifications are subject to change without
notice or obligation to Gulf Stream Coach, Inc.



GULF STREAM - BUILT TO LAST!

CONQUEST LIMITED EDITION



W6302

With flowing new exterior graphics, ducted roof air conditioning, full pass-through basement storage, and wide-body floorplans available, the Gulf Stream Limited Edition mini-motorhome continues to be a top seller in the Class C arena.

Tubular steel sub-floor trussing and floor framing, combined with aluminum-framed, vacuum-bond laminated sidewalls and roof make the Limited Edition the best constructed coach on the market.

Solid oak raised-panel cabinet doors and fresh new designer-coordinated decors featuring only the finest durable fabrics and carpeting give the Limited Edition a look of unmatched elegance. With a designer awning, microwave oven, double-door refrigerator and 13,500 BTU roof air conditioner just to name a few, the Ultra Limited Edition comes equipped with more standards than almost any coach on the market.



W6212

The Conquest Limited Edition Class C by Gulf Stream offers a wide variety of floorplans, ranging in length from 21' to 31', including a number of slide-out models. Gulf Stream was the first to offer slide-outs in Class C's and continues to lead the way with an exciting array of slide models including this incredible 31' coach with two slide-outs.



The LE features large, steel-framed, pass-through sub-floor storage for all your travel storage needs.

Check out this incredible 21' coach with a slide-out and a down bed (shown to the left). This truly innovative floorplan is a perfect fit for families looking for more living space without more length.



W6266

This roomy Limited Edition double slide-out flooplan features a roomy living area with sofa slide to entertain guests, along with a galley that features a microwave, range and designer double sink, and an abundance of base cabinet and overhead storage. There's also a spacious bathroom layout with a full size shower and huge linen closet.

Limited Edition

This roomy Limited Edition bedroom slide-out features rich oak cabinetry, large dual wardrobes, two sets of drawers, designer window treatments with matching bedspread and pillow covers, and a convenient mirrored vanity area - making it the most spacious bedroom retreat on the market!



W6302

ENJOY THE BENEFITS OF DEALING WITH A TOP FULL-LINE RV MANUFACTURER!



Gulf Stream Coach, Inc., has been a family owned corporation since its inception in 1983. In just 16 years, Gulf Stream has grown to be one of the top full-line manufacturers of recreational vehicles in the world. With manufacturing facilities encompassing over 500 acres, including an employee country club with a nine hole golf course and swimming pool, Gulf Stream employs over 1,200 men and women producing a variety of recreational vehicles including Class A's, Class C's, travel trailers, fifth wheels and van conversions.



EXCLUSIVE 24 MONTH WARRANTY!

Gulf Stream Coach, Inc., is proud to offer a 24 month or 24,000 miles warranty on all major *structural components. In addition, major component manufacturers are providing 2 year warranties on their products installed in Gulf Stream units, such as refrigerator, television, furnace, water heater, air conditioner, awning, range, microwave, etc. See the official written Gulf Stream Coach, Inc. warranty for details.

GULF STREAM INNOVATION! Imitation is the Sincerest Form of Flattery...

Gulf Stream Coach, Inc., was the innovator of slide-out rooms in Class C motorhomes - but that was only one of the many innovations you've come to expect from Gulf Stream. Gulf Stream also led the way with:

The First Wide Body Class C!

The First Ducted Roof Air Class C!

The First Full Basement Class C!

The First Kitchen Slide-Out Class C!

The First Double Slide-Out Class C!

The First Small Coach Slide Class C!

The First Side Cabover Entertainment Center!

For more information, contact your local dealer or Gulf Stream. Gulf Stream Coach, Inc., reserves the right to make changes in colors, materials, components and specifications and to discontinue models at any time without notice or obligation. Gulf Stream Coach, Inc., assumes no responsibility for any error in type or print reproduction of specifications in this brochure. Photographs may show equipment or items that are optional and are not included in the purchase price of the coach. Test drive and review a current model at your nearest dealer.

* For the purpose this warranty, "structural components" shall be limited to the sidewalls, front and back walls, roof and floor.
SCG 50M 8/99



P.O. Box 1005 • Nappanee, IN 46550

For more information, call:
1-800-289-8787, ext. 3288

Visit our Web Site at:
www.GULFSTREAMCOACH.com